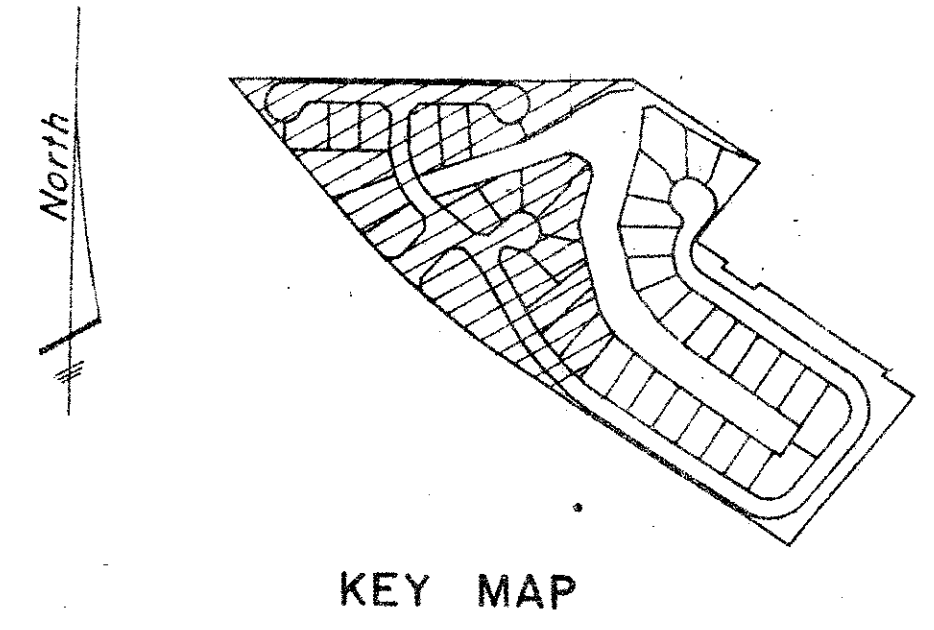
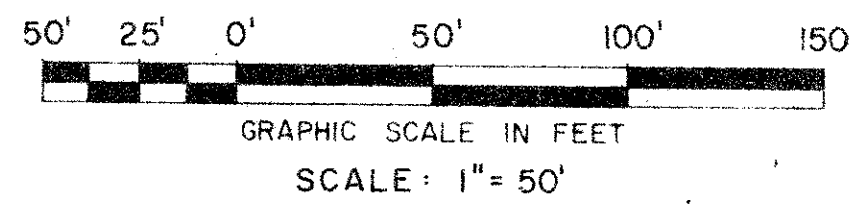
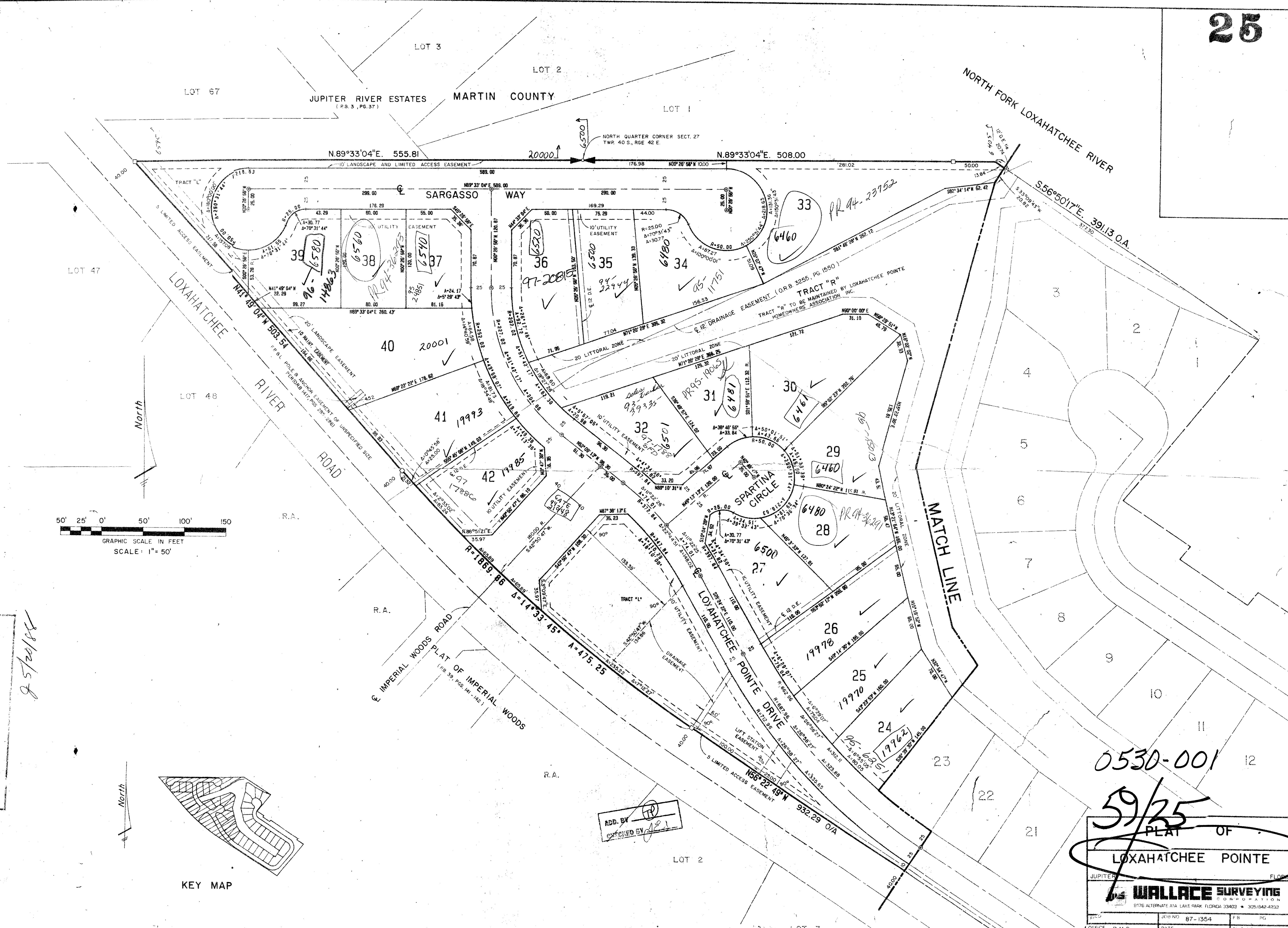


JUPITER RIVER ESTATES MARTIN COUNTY



SUBDIVISION: Jupiter River Estates  
BOOK: 89  
FLOOR: 25  
QUAD: 25  
PUB NAME: RS 39758

ADD BY: [Signature]  
CHECKED BY: [Signature]

0530-001

59/25

PLAT OF LOXAHATCHEE POINTE

WALLACE SURVEYING CORPORATION  
3176 ALTERNATE A1A LAKE PARK FLORIDA 33403 • 305/842-4332

OFFICE	R.M.R.	DATE	1987	DWG NO	87-1354
CKD	W.D. JORDAN	REF	BL-1543	SHEET	2 OF 3

PLAN HOLD CORPORATION • IRVINE, CALIFORNIA  
RECORDED BY NUMBER 07548